

# Specifications

## CPU AND MEMORY

- CPU: 32-bit CPU
- MEMORY: 8MB SDRAM, 4MB Flash ROM, SD slot (up to 4GB)

## PRINT

- RESOLUTION: 203 dpi/300 dpi
- PRINT MODE: Direct Thermal/Thermal Transfer
- PRINT SPEED: 1" to 4" ips
- MAX. PRINT LENGTH: 150 inches
- PRINT WIDTH: 4.1" (104mm)
- BARCODE:
  - 1D: Code39, Code93, Code128 UCC, Code128 auto, Codabar, EAN8, EAN13, Interleaved 2 of 5, UCC/EAN 128, UPC A, UPC E, UPC Interleaved 2 of 5
  - 2D: Data Matrix, MaxiCode, PDF417
- FONT:
  - 5 internal expandable bitmap fonts (alpha-numeric)
  - 2 internal expandable bitmap fonts (numeric only)
  - Downloadable soft font
  - 4 directions: 0, 90, 180, 270 degrees
- IMAGE: PCX, Direct binary graphic

**SENSOR TYPE:** Moveable reflective and see-through sensor, Label sensor, Cover open sensor, ribbon sensor

**DISPLAY:** Backlight LCD display 128x64 dots

**CONTROL PANEL:** 4 multi-functional keys, 4 status LED light, 1 error LED light

## MEDIA

- WIDTH: 0.59"~4.33"(15mm~110mm)
- MEDIA ROLL DIAMETER: ID-1" (25.4mm)/OD-Max. 5"(127mm)
- MEDIA THICKNESS: 0.002" (0.06mm) to 0.0075" (0.2mm)
- MEDIA TYPE: Continuous, die-cut, tag, fan-fold, black mark

## RIBBON

- WIDTH: 1.0" (25.4mm) to 4.3" (110mm)
- RIBBON ROLL DIAMETER: ID - 0.5"/OD - 1.535"
- RIBBON LENGTH: Max. length - 100M
- RIBBON TYPE: Wax, wax/resin, resin

**INTERFACE:** Serial, Parallel, USB master and slave, Ethernet 10/100Mbps (option)

**POWER:** Switching power adapter - Input: 100 to 240V/Output: 24V

**AUDIO:** Beep sound when error occurs

**OPTION:** Peeler kit, Cutter, Ethernet module

**OPERATING TEMPERATURE:** 5°C to 45°C(40°F to 112.9°F)

**PRINTER DIMENSION:** 200(W) x 263(L) x 188(H) mm, Weight: 2KG

**CERTIFICATION:** CE, FCC class B, CCC, CB

## Option

### Cutter



### Peeler



### Ethernet



# CODE SOFT®



**Computer Peripheral  
and Supplies Ltd.**

**S4** Modern Shape, Unlimited Applications  
Multi-functional label printer



# Printer Overview

## Mechanical features



Graphic LCD



4 function buttons + flash indication



See-through sensor (Auto Detection)

Large Window

Tear off metal bar

Easy ribbon installation

Easy Printer Head Replacement (203/300 Printer Resolution)

See-through sensor (Unique)

Easy Media installation

Moveable reflective sensor

Easy Roller Replacement

Double Wall

Plug and play for cutter and peeler

SD card Slot

Top Cover Safety Latch



SD card Slot (Up to 4GB)



Full communication ports



Easy Roller Replacement

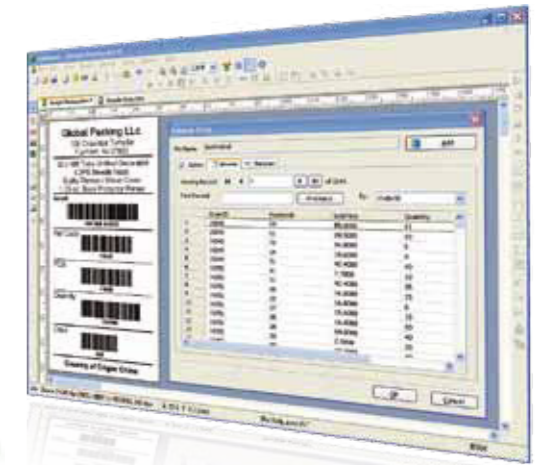
## Software features

- Freeware Software
- Professional Edition Features (Database and 2-D Barcode)
- Multilingual Interface
- Support labels and forms making
- A full range of tools (PrinterTool, FWTool, DriverSetup...)



Database

2-D Barcode

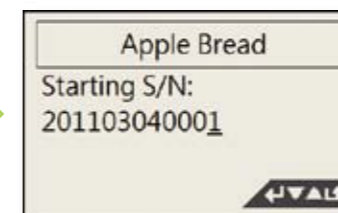


## Multi-function stand-alone operation Features

- No PC Operating.
- Easy Forms Update and Easy Data Storage via SD card
- Variety of external devices connections (USB-KeyBoard, USB-Scanner, Scale, Counter...)
- BarDrawer easily edit form
- Convenient form operation
- Multilingual LCD display



Form List



Form Content



Multilingual LCD Display